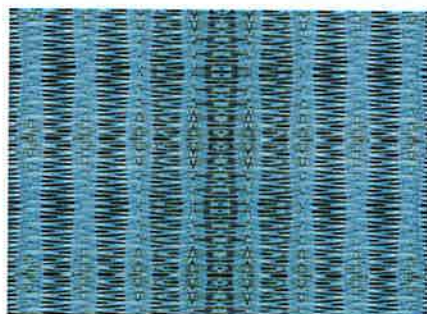


Laura Lowen's "Bears with Beards" will be represented at the show by Jennifer Nelson Artists, where Lowen will also debut new characters, holiday and Christmas art.

John Watson Studio's piece numbered F4661c 25V reflects the designer's simple and refined aesthetic.



Sweetheart from Dot Dash Design studio, which makes its first appearance at Surtext this year with more than 30 new surface pattern collections.



Puddle Ink is a creative collaboration of sisters Callie Crosby and Rebecca Daw, who share a love of all things colorful, bold and graphically simple.

## A Cornucopia of Design

Surtext 2015 will provide international perspective

Design motifs of every variety will be on display at Surtext North America this month, when the annual surface design show presents more than 300 exhibitors from May 17-19 at the Jacob K. Javits Convention Center in New York.

Artists from North America, Europe, Asia and Australia will be represented at the event. This year the show welcomes more than 50 newcomers, including studios, agents, and U.S. and international vendors.

In addition, the four winning designs from Surtext's designnext international design competition will be on display and the grand prize winner will be announced May 18. **H&TT**



Sunlit Beauty from JSB Photo Art, a newcomer to the art licensing market.



Crewest Studio's Gallery Showcase is offering work from urban contemporary artists, including Gustavo Alberto seen here.



Design Works International features the work of designers from around the world and was founded by Nancy Fire, who is also design director for HGTV Home.



MHS Licensing + Consulting marks its 20th anniversary with works from Patrick Reid O'Brien, seen here, and at the show will also introduce artists Lynn Sanchelli and Carolyn Blaylock.